



100% OXYGEN ADSORPTION

All dissolved oxygen in incoming water is completely adsorbed. Zero residual oxygen.



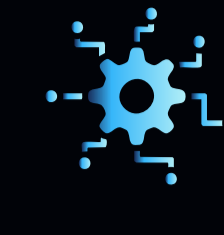
PERMANENTLY LOCKED

Oxygen is chemically bound inside the OxyLock® media. No release. No desorption.



ADVANCED FILTRATION

Multi-stage filtration removes particles and supports biofilm control.



AUTOMATION & CONTROL

PLC with HMI for real-time monitoring, data logging, and remote access.



SAFE BY DESIGN

Engineered with redundancy, fail-safes, and continuous monitoring.

OXYLOCK® SYSTEM FEATURES

- ✓ Eliminates Legionella & biofilm
- ✓ Continuous disinfection by anoxic conditions
- ✓ Zero chemical handling
- ✓ No biocides, no chlorine, no by-products
- ✓ Low power & low maintenance
- ✓ Fully automated operation
- ✓ Environmentally friendly
- ✓ Sustainable & safe

- TREATED WATER (OXYGEN-FREE)
- RAW WATER (INLET)
- FILTRATION
- OXYLOCK® MEDIA (ADSORPTION)
- DRAIN / BLOWDOWN
- INSTRUMENTATION

OXYLOCK® CORE TECHNOLOGY

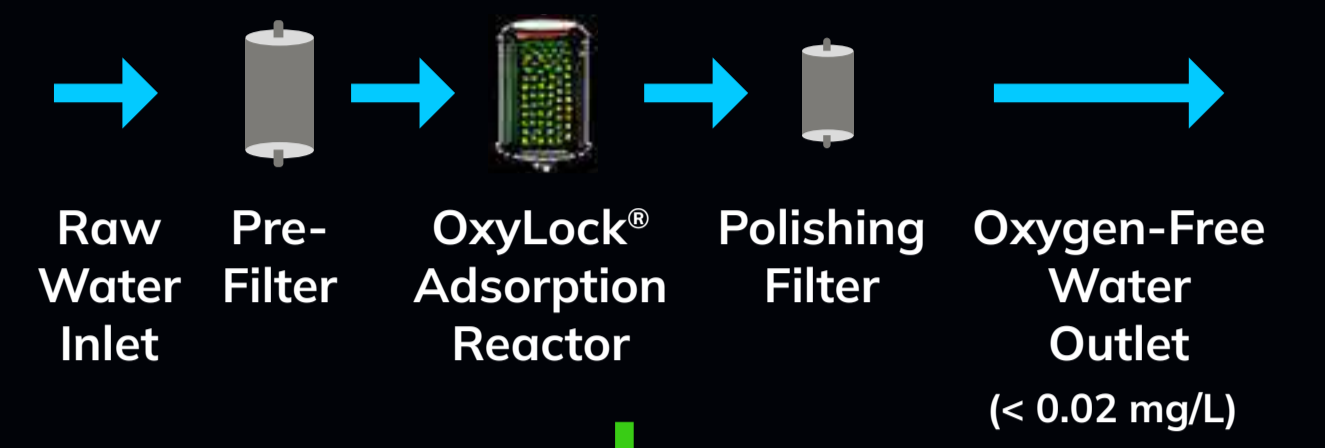


OXYLOCK® CORE TECHNOLOGY

OXYGEN IS ADSORBED - NOT STRIPPED, NOT VENTED, NOT RELEASED.
100% ADSORPTION. ZERO RELEASE.

OXYGEN ADSORPTION PROCESS

(NO DOSING - ONLY REMOVAL BY ADSORPTION)

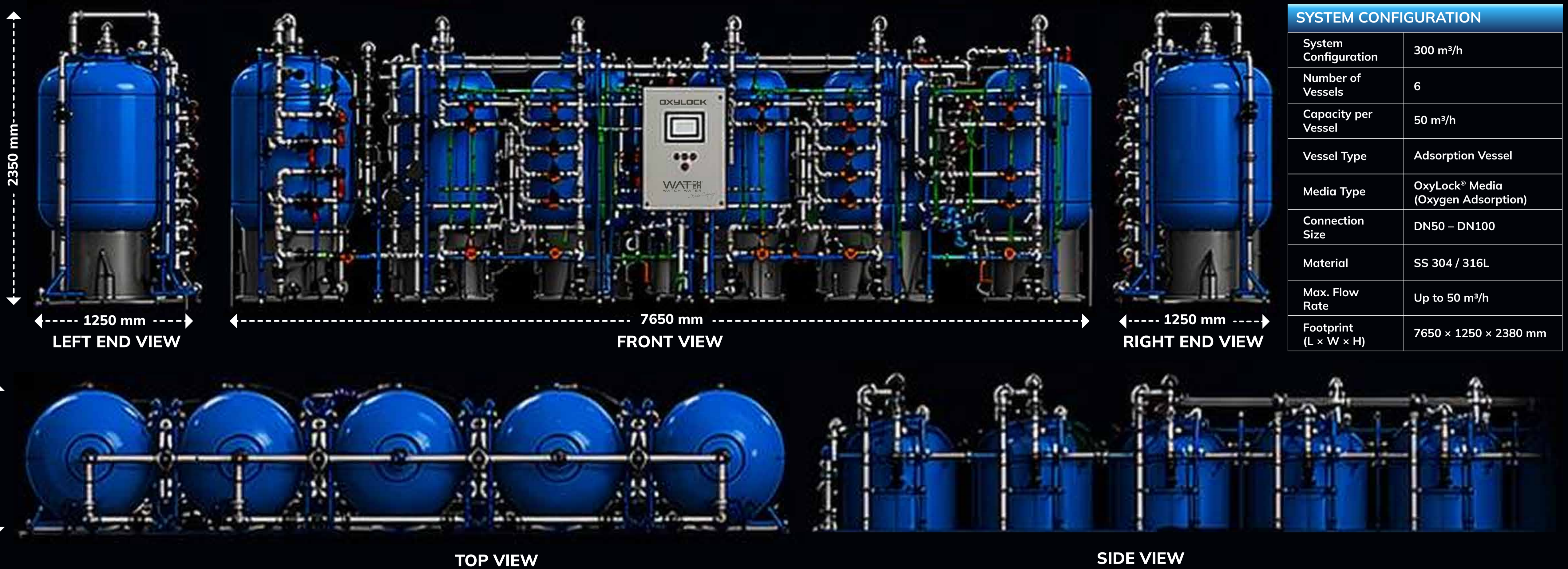


In the OxyLock® reactor, dissolved oxygen is 100% adsorbed and permanently locked inside the proprietary media. No release. No vent. No gas phase.

CONTROL & MONITORING

NO CHEMICALS. NO BIOCIDES. NO CHLORINE.
JUST PURE, OXYGEN-FREE WATER.

TOTAL SYSTEM CAPACITY : 300 m³ | 6 VESSELS x 50 m³ EACH



SYSTEM CONFIGURATION	
System Configuration	300 m ³ /h
Number of Vessels	6
Capacity per Vessel	50 m ³ /h
Vessel Type	Adsorption Vessel
Media Type	OxyLock® Media (Oxygen Adsorption)
Connection Size	DN50 - DN100
Material	SS 304 / 316L
Max. Flow Rate	Up to 50 m ³ /h
Footprint (L x W x H)	7650 x 1250 x 2380 mm

HOW OXYLOCK® WORKS

- 1 RAW WATER ENTERS**
Incoming water contains dissolved oxygen (DO).
- 2 OXYGEN ADSORPTION**
OxyLock® media captures and adsorbs dissolved oxygen molecules.
- 3 OXYGEN LOCKING**
Oxygen is chemically bound and permanently locked inside the media structure.
- 4 RESULT**
Residual DO < 0.02 mg/L. Completely anoxic water. Legionella cannot survive.

**ZERO OXYGEN. ZERO LIFE.
ZERO LEGIONELLA.**

SYSTEM SPECIFICATIONS

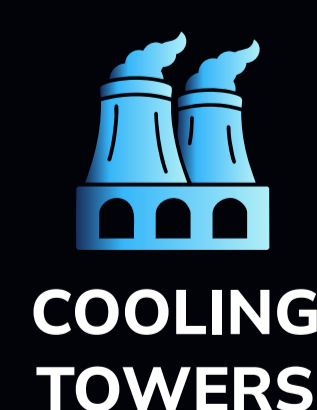
Parameter	Value
Total System Capacity	300 m ³ /h
Capacity per Vessel	50 m ³ /h
Number of Vessels	6
Maximum Flow Rate	Up to 50 m ³ /h
Residual Dissolved Oxygen	< 0.02 mg/L (@ 1.0 mg/L inlet)
Removal Efficiency	100% Oxygen Adsorption
Operating Pressure	2 - 6 bar
Operating Temperature	5 - 40 °C
Power Supply	380 - 415 V / 50 Hz
Power Consumption	3 - 7 kW
Control System	PLC + HMI / Remote Access
Materials (Wetted Parts)	SS 304 / 316L, PVC-U, EPDM
Applications	Cooling towers, hospitals, hotels, commercial & industrial systems

KEY BENEFITS

- ✓ 100% removal of dissolved oxygen
- ✓ Oxygen is permanently adsorbed - no release
- ✓ Legionella cannot grow or survive
- ✓ Prevents biofilm formation
- ✓ No chemicals, no biocides, no by-products
- ✓ Lower total cost of ownership
- ✓ Reliable, robust, and easy to operate
- ✓ Sustainable and environmentally friendly
- ✓ Ensures compliance with health & safety standards

OXYLOCK®
**SAFE WATER
SAFE ENVIRONMENT**

**IDEAL FOR
CRITICAL SYSTEMS**



ENGINEERED FOR LIFE. DESIGNED FOR SAFETY. BUILT FOR TRUST.

WATCH WATER® GmbH

Fahrlachstraße 14, 68165 Mannheim, Germany

Telephone : +49 621 879510

Email : info@watchwater.de

www.watchwater.de

WATCH WATER®
WATCH WATER

a Water Company